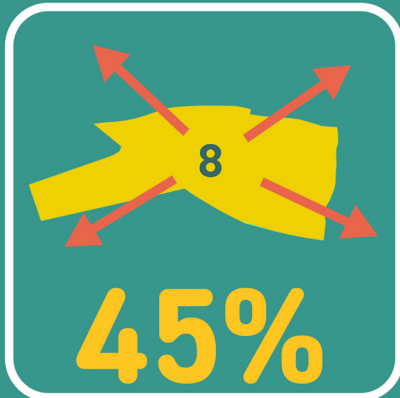


Educate D8

Educate D8 is a community group representing families in Dublin 8. For generations, Dublin 8 has experienced under-investment in secondary education.

Our campaign has two main aims to address the under-provision of school places in our area:

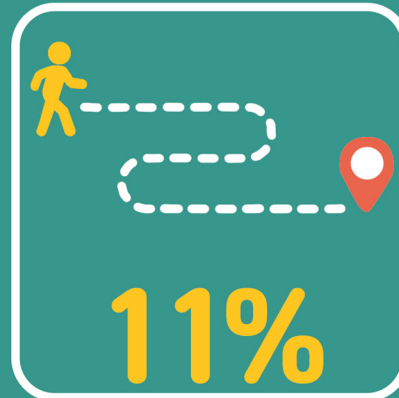
1. The establishment of a new secondary school for our area
2. Gain access to the consultation process on ethos and patronage



of children in D8 must leave the area to go to secondary school



D8 kids will need to leave the area to go to secondary school by 2026



of children walk or cycle to school in Kilmainham - compared to 75% in Clonskeagh

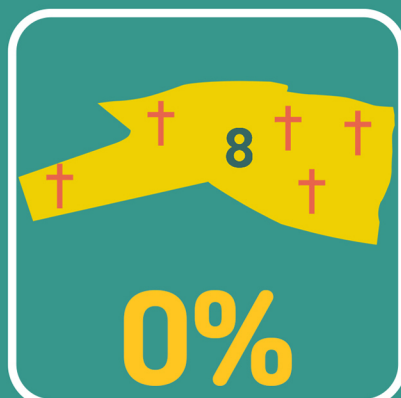
Kilmainham children have the longest commutes in Dublin



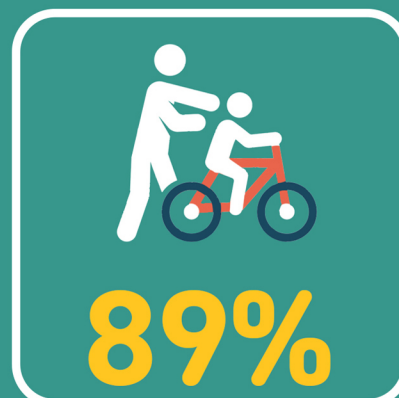
minute commute to get to Sandymount ETSS - the department's solution to our problem



of the population of D8 is NOT Catholic



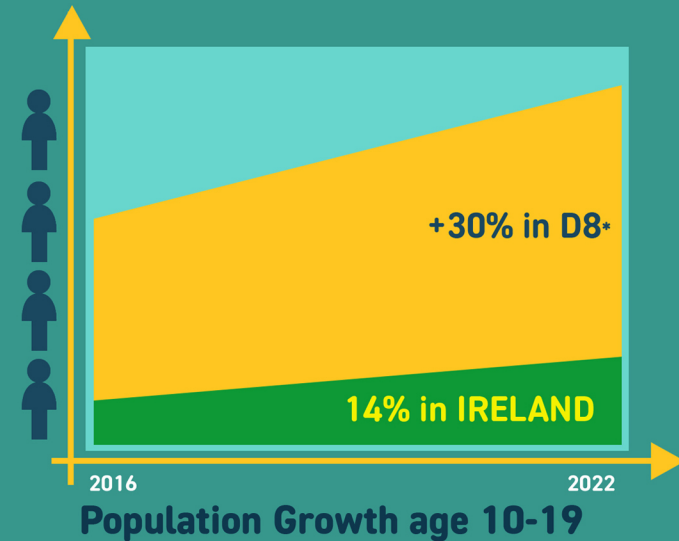
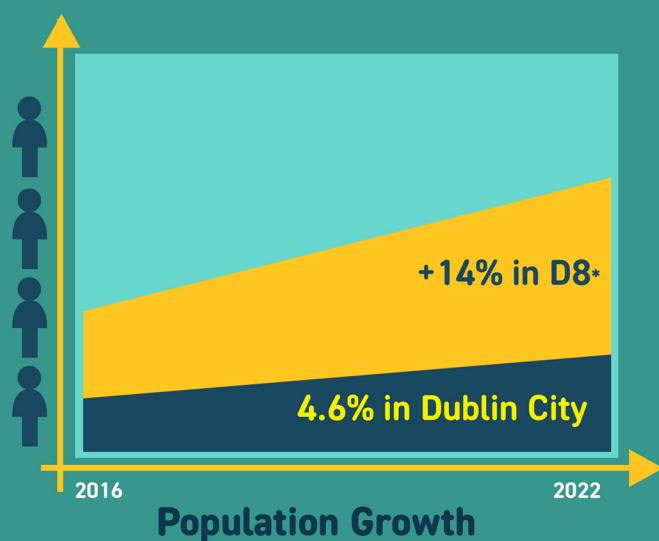
of secondary schools in d8 are multi-denominational (0/5)



of D8 parents would like to send their kids to a local secondary school



the number of schools that 6th class children are dispersed to



*D8 = South West Inner City Local Electoral Area. Population change 2022 v 2016.

Our key requests for local representatives

- 1 Ask your party's Education spokesperson to prioritise our campaign
- 2 Help us to identify potential sites for a new secondary school for Dublin 8, which can be zoned for education

Visit our website <https://d8newschool.ie/>

- 3 or join our campaign WhatsApp - scan the QR code to the right or <https://chat.whatsapp.com/Kl3PytsabTv1jsZfStgPTr>

